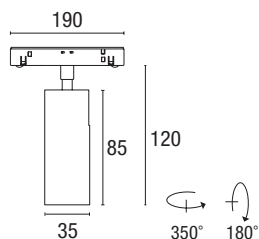


# TRACK LIGHTING

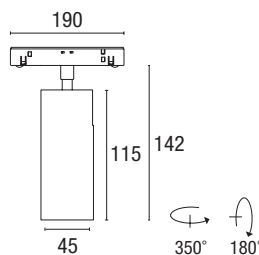
## EVOQUE



Power	Lumen output	Source	Weight	Code to complete *
<b>5 W</b>	487 lm	CoB LED	0,15 kg	<b>TT-AA +</b> ● ■ ▲ ∴ □

◆ 48Vdc | IP20

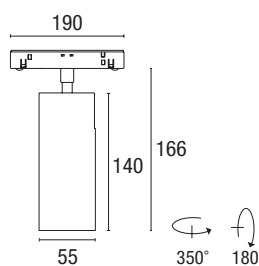
CRI>90 | RG1 | SCDM<3 - UP to 97,4 lm/W | L80/B20 80.000 h.  
Lumen output values: luminaire luminous flux at 4000 K - optics 24°



<b>10 W</b>	874 lm	CoB LED	0,23 kg	<b>TT-AB +</b> ● ■ ▲ ∴ □
-------------	--------	---------	---------	--------------------------

◆ 48Vdc | IP20

CRI>90 | RG1 | SCDM<3 - UP to 97,4 lm/W | L80/B20 80.000 h.  
Lumen output values: luminaire luminous flux at 4000 K - optics 24°



<b>15 W</b>	1238 lm	CoB LED	0,40 kg	<b>TT-AC +</b> ● ■ ▲ ∴ □
-------------	---------	---------	---------	--------------------------

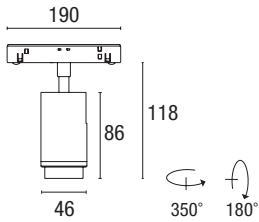
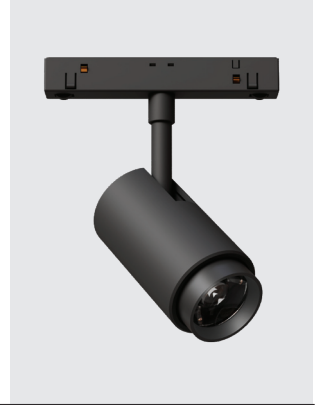
◆ 48Vdc | IP20

CRI>90 | RG1 | SCDM<3 - UP to 97,4 lm/W | L80/B20 80.000 h.  
Lumen output values: luminaire luminous flux at 4000 K - optics 24°

### \* Select your option

Colour adapter	●	CCT	■	Optic	▲	Control	∴	Colour	□
Bianco	W	2700 K	1	24°	2	On/Off	NV	Bianco	W
Nero	B	3000 K	2	38°	3	DALI	DV	Nero	B
		4000 K	3	55°	4			Bronzo	Z
								Titanio	T
								Acciaio spazzolato	A
								Oro spazzolato	Y

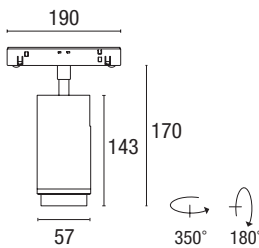
# EVOQUE\_ZOOM



Power	Lumen output	Source	Optical	Weight	Code to complete *
10 W	614 lm	CoB LED	Zoom 15°-36°	0,30 kg	<b>TZ-AB +</b> ● ■ ☺ □

◇ 48Vdc | IP20

CRI>90 | RG1 | SCDM<3 - UP to 61 lm/W | L80/B20 80.000 h.  
Lumen output values: luminaire luminous flux at 4000 K



15 W	1069 lm	CoB LED	Zoom 15°-36°	0,36 kg	<b>TZ-AC +</b> ● ■ ☺ □
------	---------	---------	-----------------	---------	------------------------

◇ 48Vdc | IP20

CRI>90 | RG1 | SCDM<3 - UP to 61 lm/W | L80/B20 80.000 h.  
Lumen output values: luminaire luminous flux at 4000 K

## \* Select your option

Colour adapter		CCT		Control		Colour	
Bianco	W	2700 K	1	On/Off	NV	Bianco	W
Nero	B	3000 K	2	DALI	DV	Nero	B
		4000 K	3				