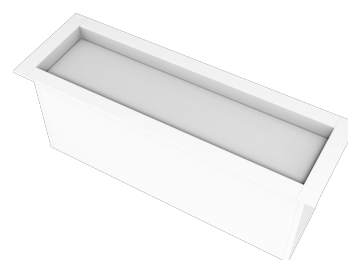


### Maya Trimmed Dark

**SM-CAAYQ1EWNF** - 2700 K - White / 6 W / 2700 K / CRI >90

#### DESCRIPTION

Maya recessed it's available with trimless installation and frame at sight. The range can be divided in two major models: with wire optical plane (Maya Filo) and landed optical plane (Maya Dark). An optical bank which 4 cluster only, enables the use in spaces where a good lighting is required but installation space is restricted. The product can be configured even with a micro prismatic or brushed screen. It guarantees luminous efficiency on top category and highest Standard on electronic components.

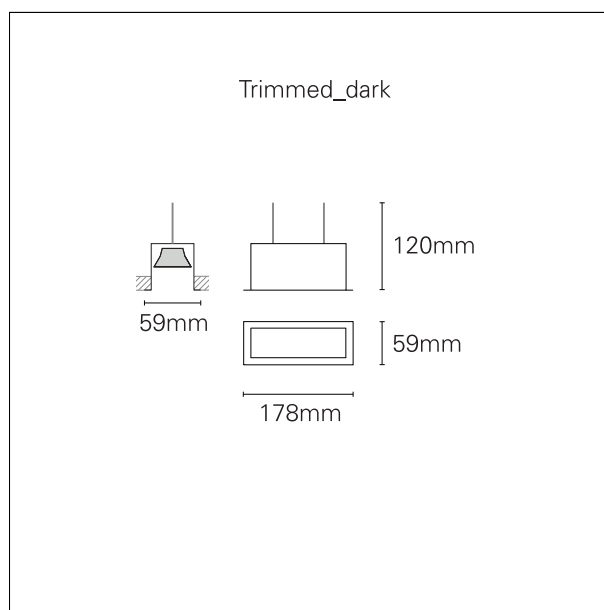


Switch

On÷Off

#### PRODUCTS CHARACTERISTICS

installation type	<b>Recessed Spotlights</b>
material	<b>Aluminum</b>
Color	<b>White</b>
Power	<b>6 W</b>
Lumen output - Direct emission	<b>460 lm</b>
Efficacy	<b>76 lm/W</b>
Dimensions	<b>150 mm.</b>



#### ELECTRICAL CHARACTERISTICS

feeding	<b>220÷240 V</b>
driver	<b>On÷Off</b>
Insulation class	<b>Class I</b>

#### HOLE RECESS DIMENSIONS

a x b hole recess	<b>46x159x80 mm</b>
-------------------	---------------------

### Maya Trimmed Dark

**SM-CAAYQ1EWNF** - 2700 K - White / 6 W / 2700 K / CRI >90

#### LED SOURCE DETAILS

led source type	<b>LED SMD</b>
LED current	<b>250 mA</b>
LED voltage	<b>23 V</b>
Energy class	<b>E</b>
Service lifetime	<b>L80 / B20 - 50.000 h.</b>
Light temperature	<b>2700 K</b>
CRI	<b>CRI &gt;90</b>
SDCM	<b>&lt; 3</b>

#### DRIVER CHARACTERISTICS

driver	<b>On+Off</b>
Current	<b>250 mA</b>
Voltage	<b>36V</b>
Power factor	<b>&gt; 0,9</b>

#### LIGHTING DETAILS

optic	<b>120°</b>
Beam angle - direct	<b>120°</b>
Screen type	<b>PMMA</b>
UGR	<b>&lt; 21</b>

#### PHOTOMETRIC

